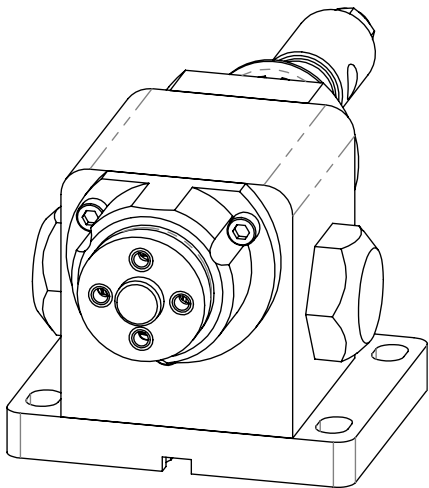
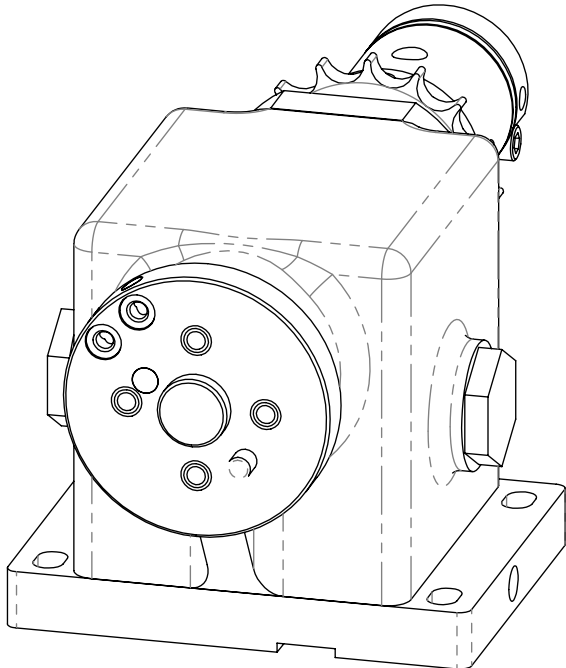


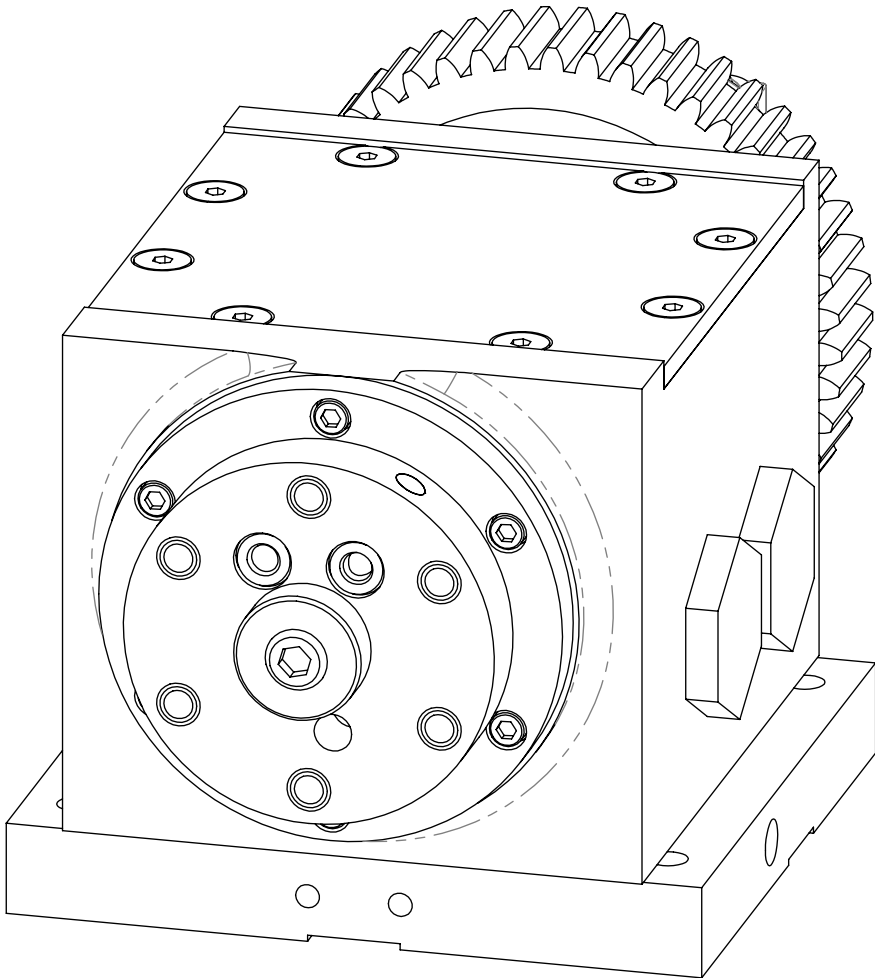
- GENERAL SPECIFICATIONS
- D17.2 READY
 - SILVER LINED BRUSH CONTACT
 - OIL BATH
 - DRIVER OR IDLER AVAILABLE
 - INTERNALLY WATER COOLED WHEEL AVAILABLE
 - CUSTOM DRIVING OPTIONS AVAILABLE
 - ELECTRO SILVER PLATING AVAILABLE
 - 36 MONTH NO WARRANTY
 - NO REBUILDING REQUIRED



SIZE 0
MAX CURRENT: 4000 @ 100% D.C.
MAX FORCE: 150 LBS.



SIZE 1
MAX CURRENT: 10000 @ 100% D.C.
MAX FORCE: 650 LBS.



SIZE 2
MAX CURRENT: 22000 @ 100% D.C.
MAX FORCE: 3000 LBS.

ALL INFORMATION CONTAINED IN
THIS DOCUMENT IS PROPERTY OF
SEEDORFF ACME CORP. AND MAY
NOT BE REPRODUCED IN WHOLE
OR PART WITHOUT PERMISSION
OF SEEDORFF ACME CORP.

SEEDORFF RESISTANCE WELDING EQUIPMENT ANAHEIM, CA SEEDORFFACME.COM	
SEAM WELDING HEADS	
PART NO.	VARIES
DWG. NO.	R00015

4

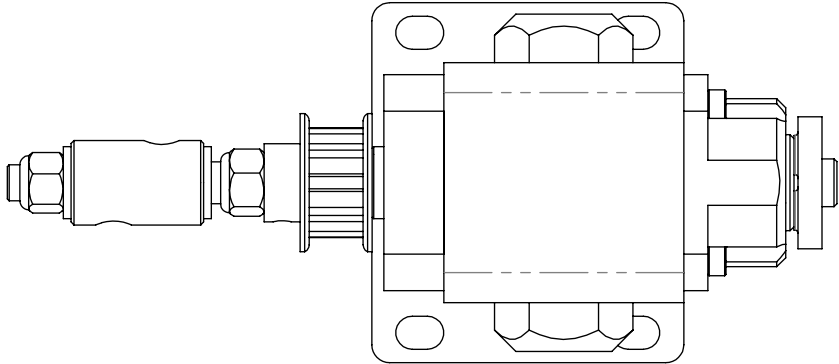
3

2

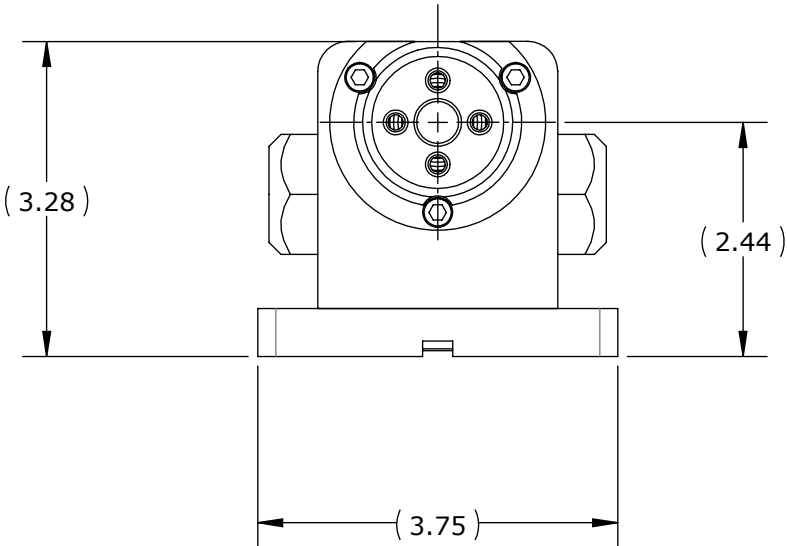
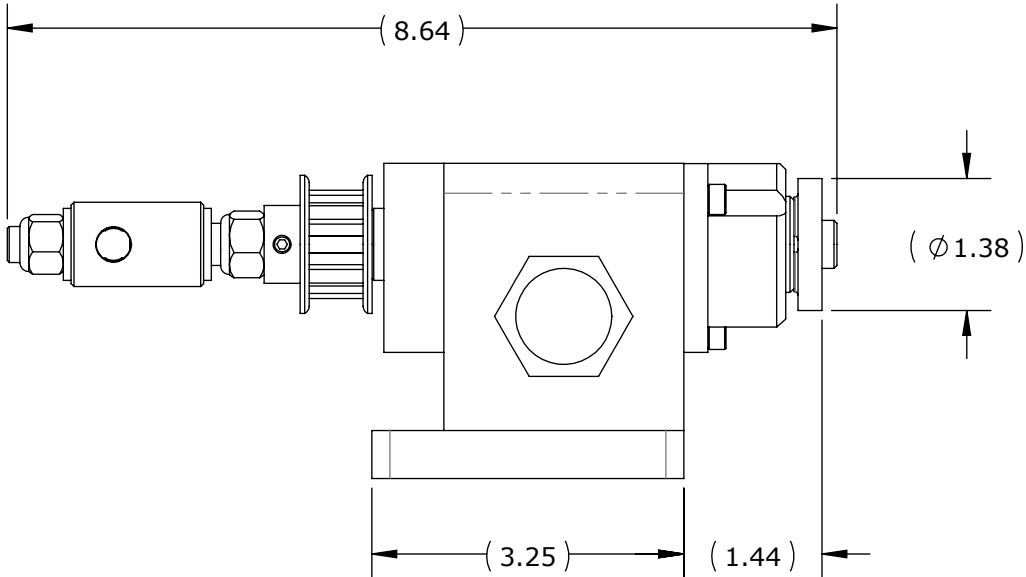
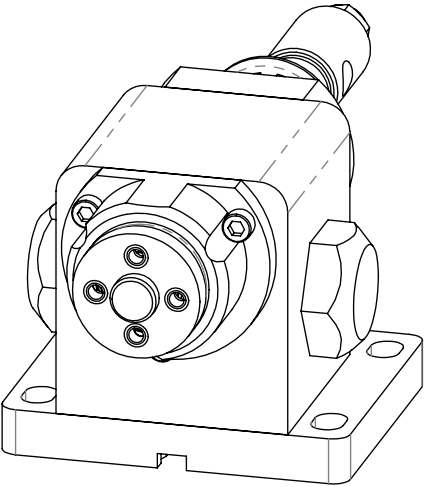
1

B

B



**RWMA
SIZE 0**



A

A

4

3

2

1

ALL INFORMATION CONTAINED IN
THIS DOCUMENT IS PROPERTY OF
SEEDORFF ACME CORP. AND MAY
NOT BE REPRODUCED IN WHOLE
OR PART WITHOUT PERMISSION
OF SEEDORFF ACME CORP.

SEEDORFF

RESISTANCE WELDING EQUIPMENT
ANAHEIM, CA
SEEDORFFACME.COM

SEAM WELDING HEADS

PART NO. VARIES

DWG. NO. R00015

4

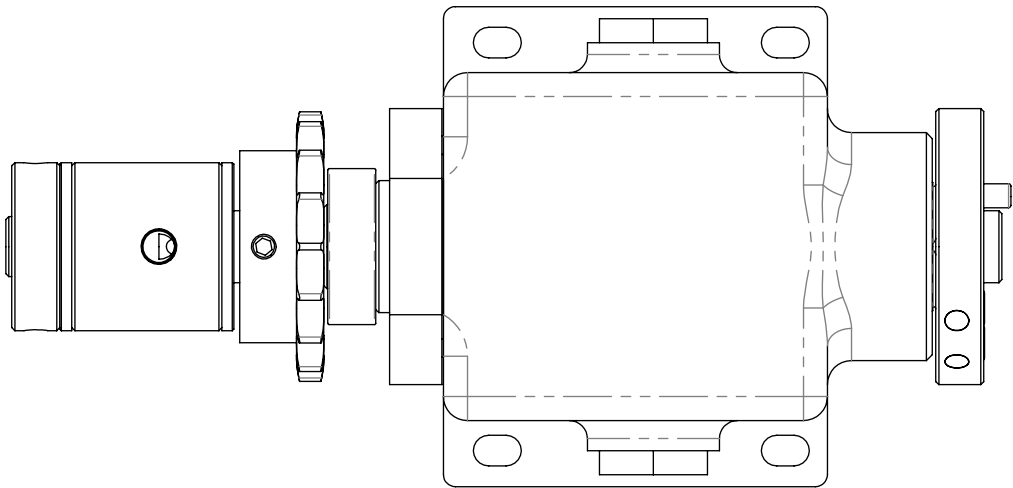
3

2

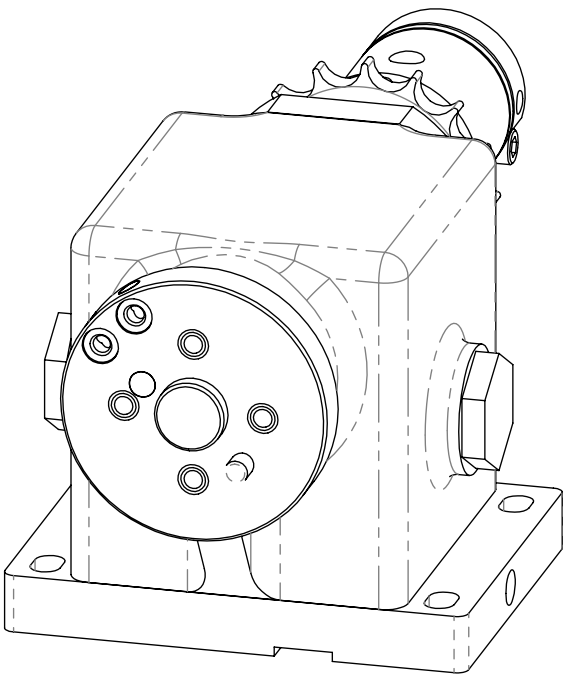
1

B

B

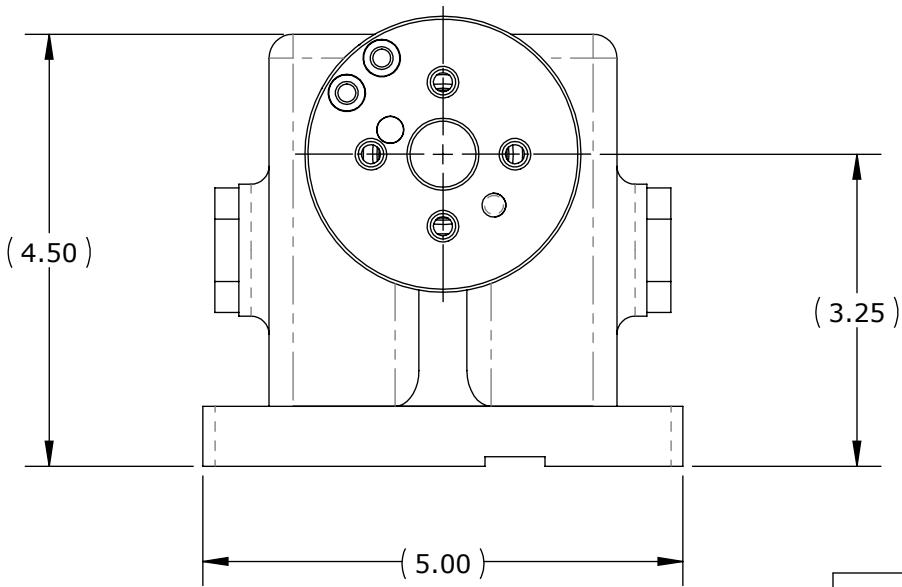
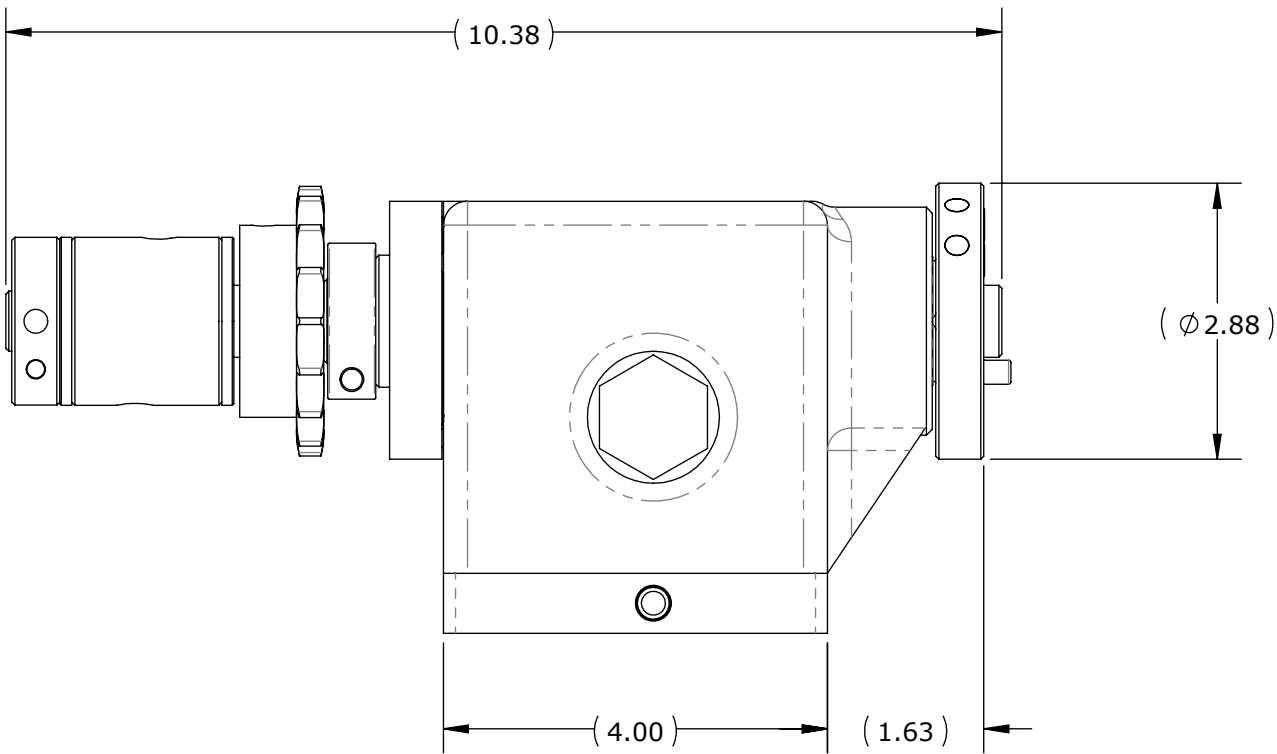


**RWMA
SIZE 1**



A

A



ALL INFORMATION CONTAINED IN
THIS DOCUMENT IS PROPERTY OF
SEEDORFF ACME CORP. AND MAY
NOT BE REPRODUCED IN WHOLE
OR PART WITHOUT PERMISSION
OF SEEDORFF ACME CORP.

SEEDORFF

RESISTANCE WELDING EQUIPMENT
ANAHEIM, CA
SEEDORFFACME.COM

SEAM WELDING HEADS

PART NO. VARIES

DWG. NO. R00015

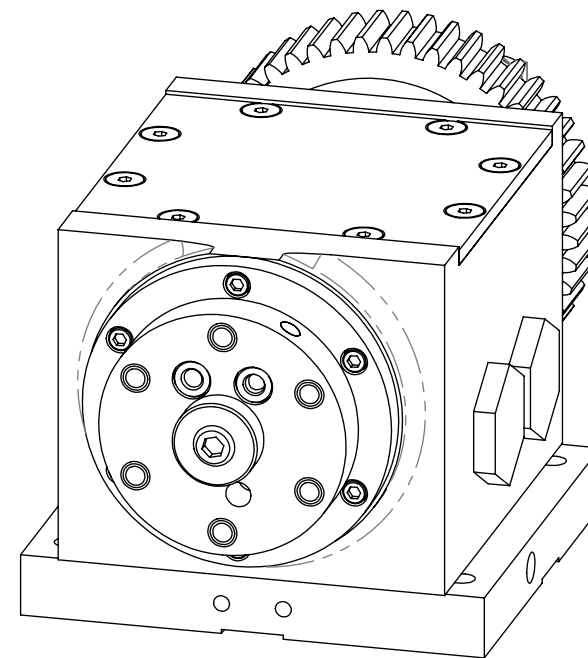
4

3

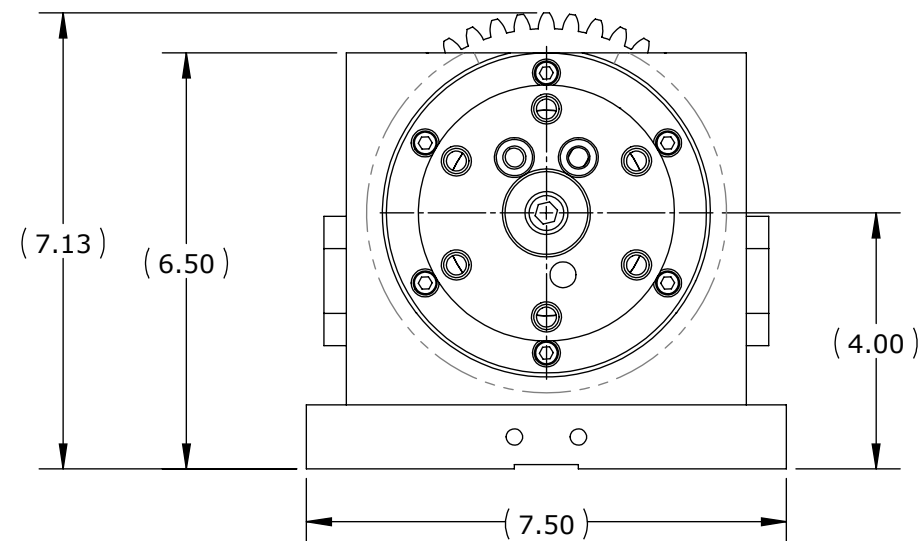
2

1

1



RWMA SIZE 2



DWG. NO.	R00015
----------	--------

ALL INFORMATION CONTAINED IN
THIS DOCUMENT IS PROPERTY OF
SEEDORFF ACME CORP. AND MAY
NOT BE REPRODUCED IN WHOLE
OR PART WITHOUT PERMISSION
OF SEEDORFF ACME CORP.

1